



Collaboration. Commitment. Confidence.SM

I-80 at Central Avenue (Phase II) – Local Roads Improvement Project

City of Richmond



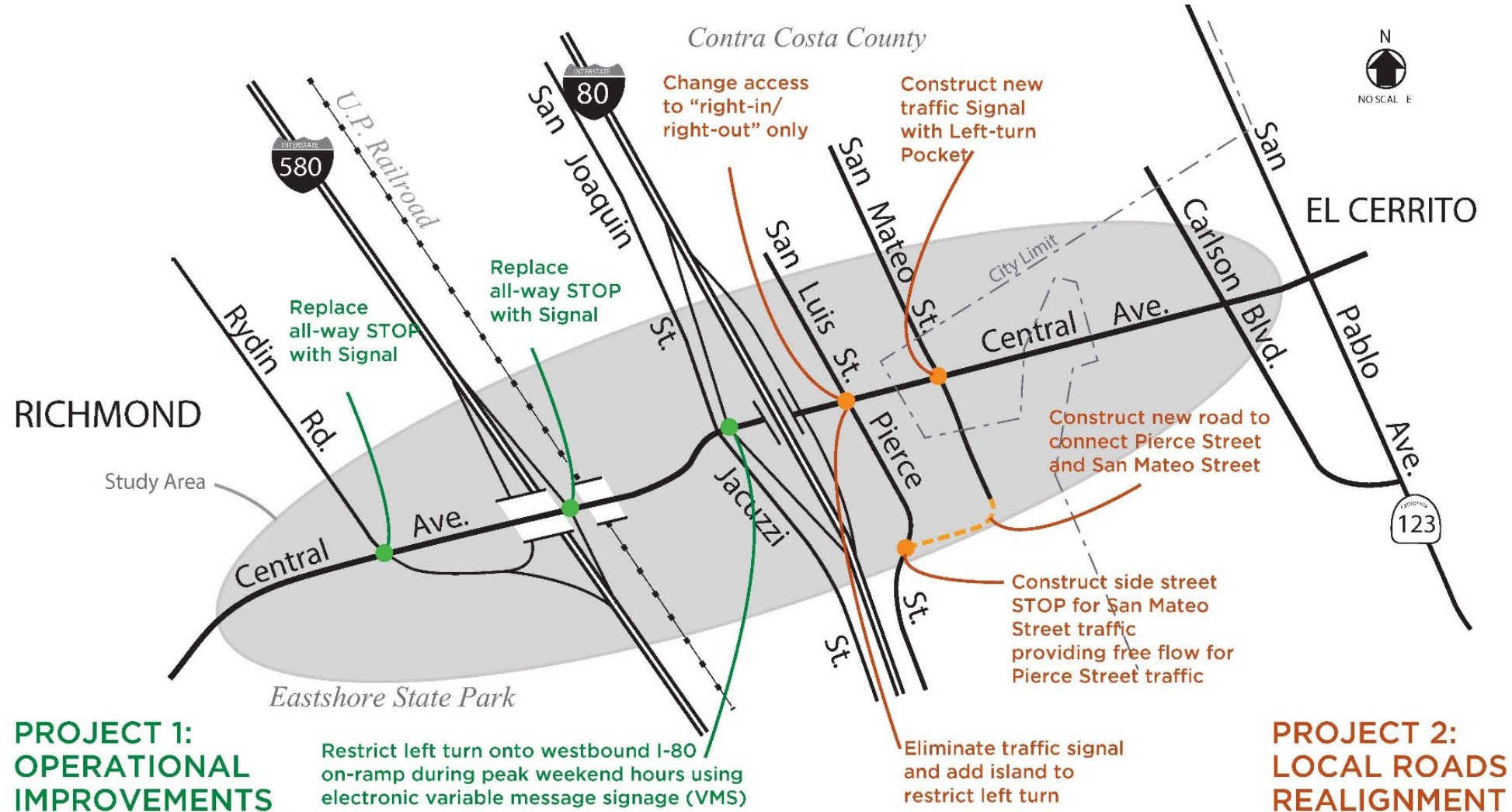


Vicinity Map

- Located within the Richmond Annex and City of El Cerrito
- Project Location - Central Avenue at I-80



Project Background – Phase 1 and 2



Graphic Courtesy CCTA

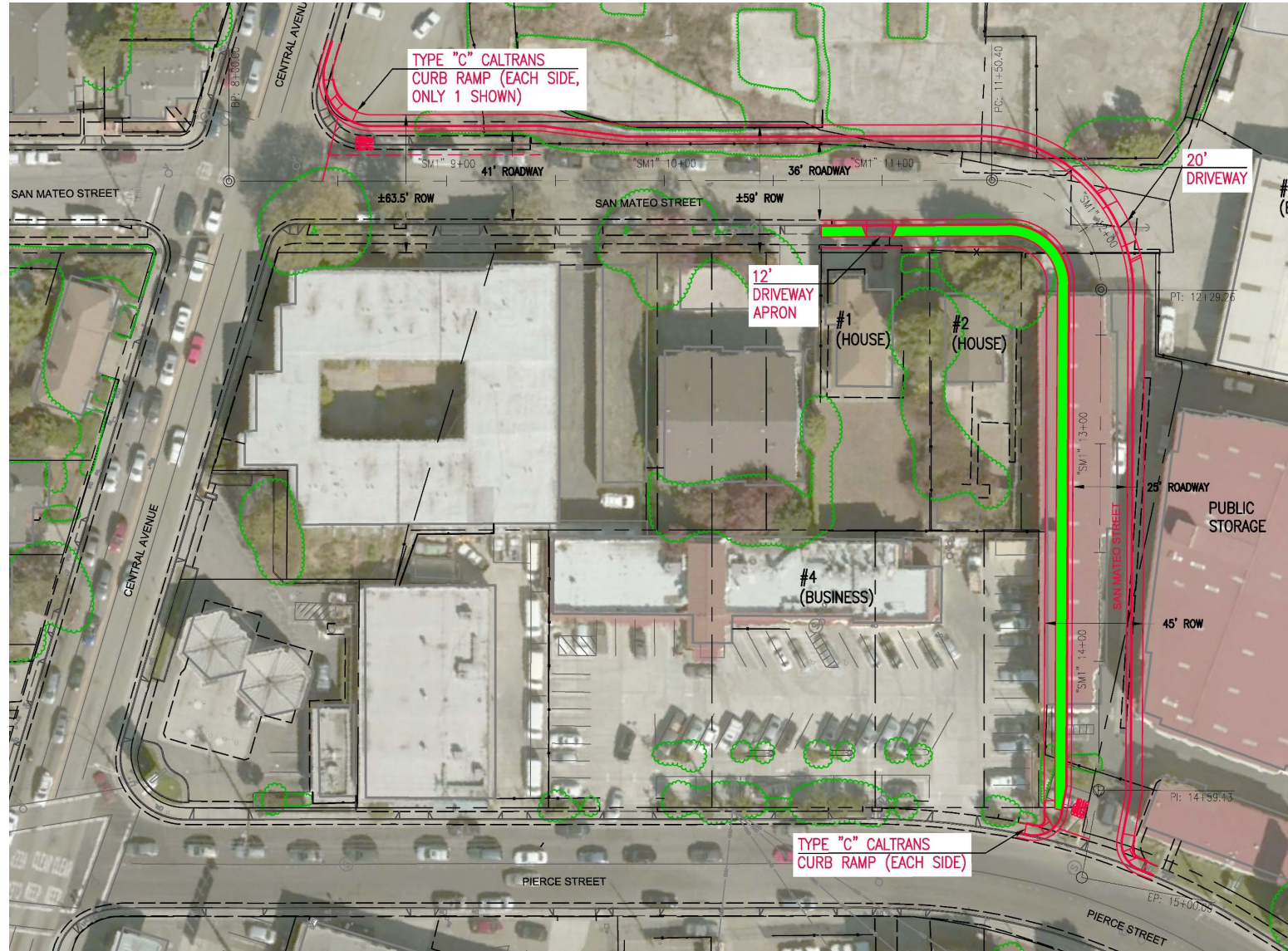


Phase 1 & 2 Planning Estimates

- 2017 CCTA Estimates
- Phase 1 - \$6 Million
 - Ready for Construction
- Phase 2 - \$20 Million,
 - Project initiation
 - Major Funding Sources – WCCTC, STIP, Measure J, City of Richmond Local Funds
 - \$5 Million Shortfall

Preliminary Study Phase – Local Roads

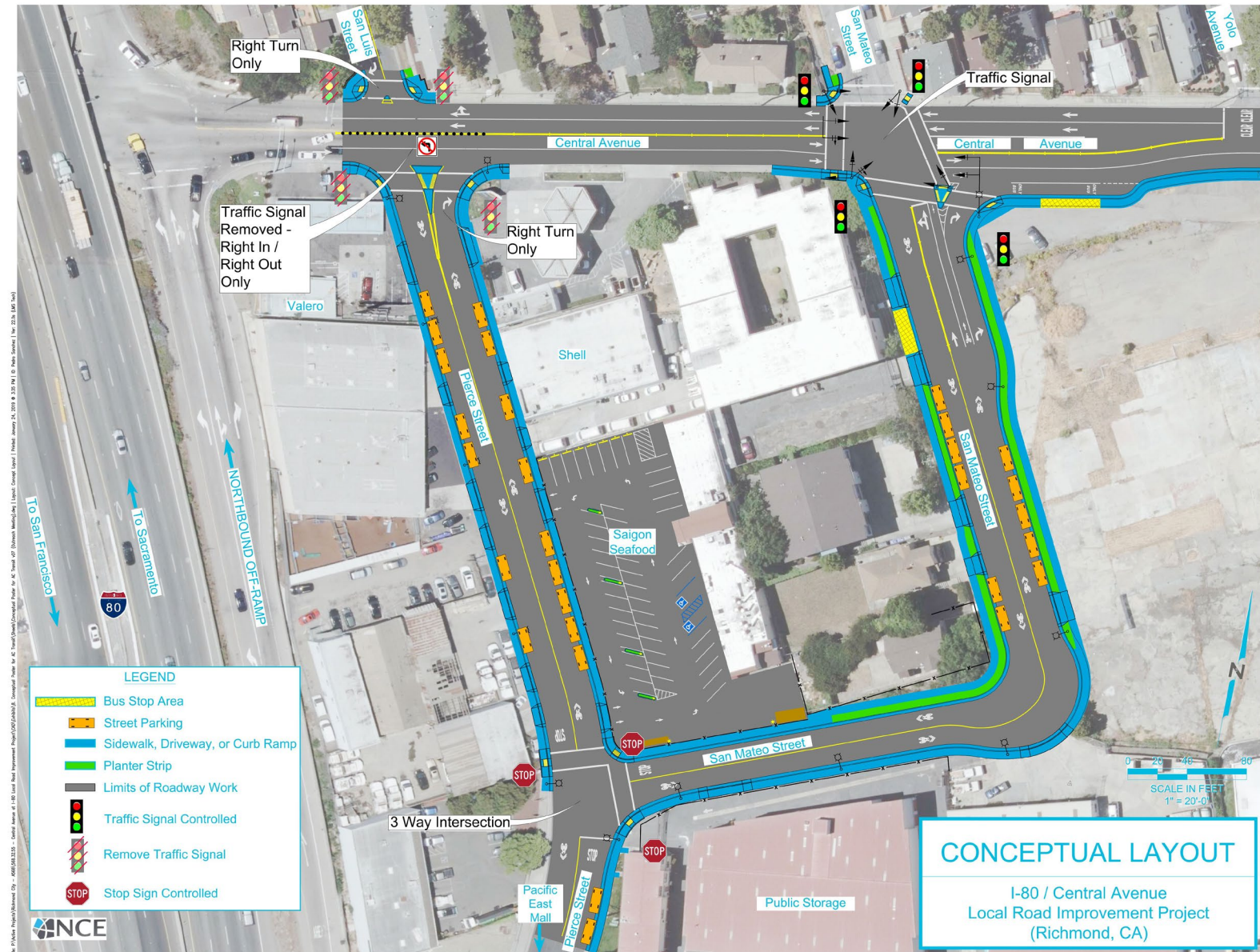
- 2017 – 2018
- Alternative Analysis and Budgetary Programming
- Developed 4 Alternatives
- \$15.2 Million (2024 \$)



Alternative 4 – “Reduced Public Storage”

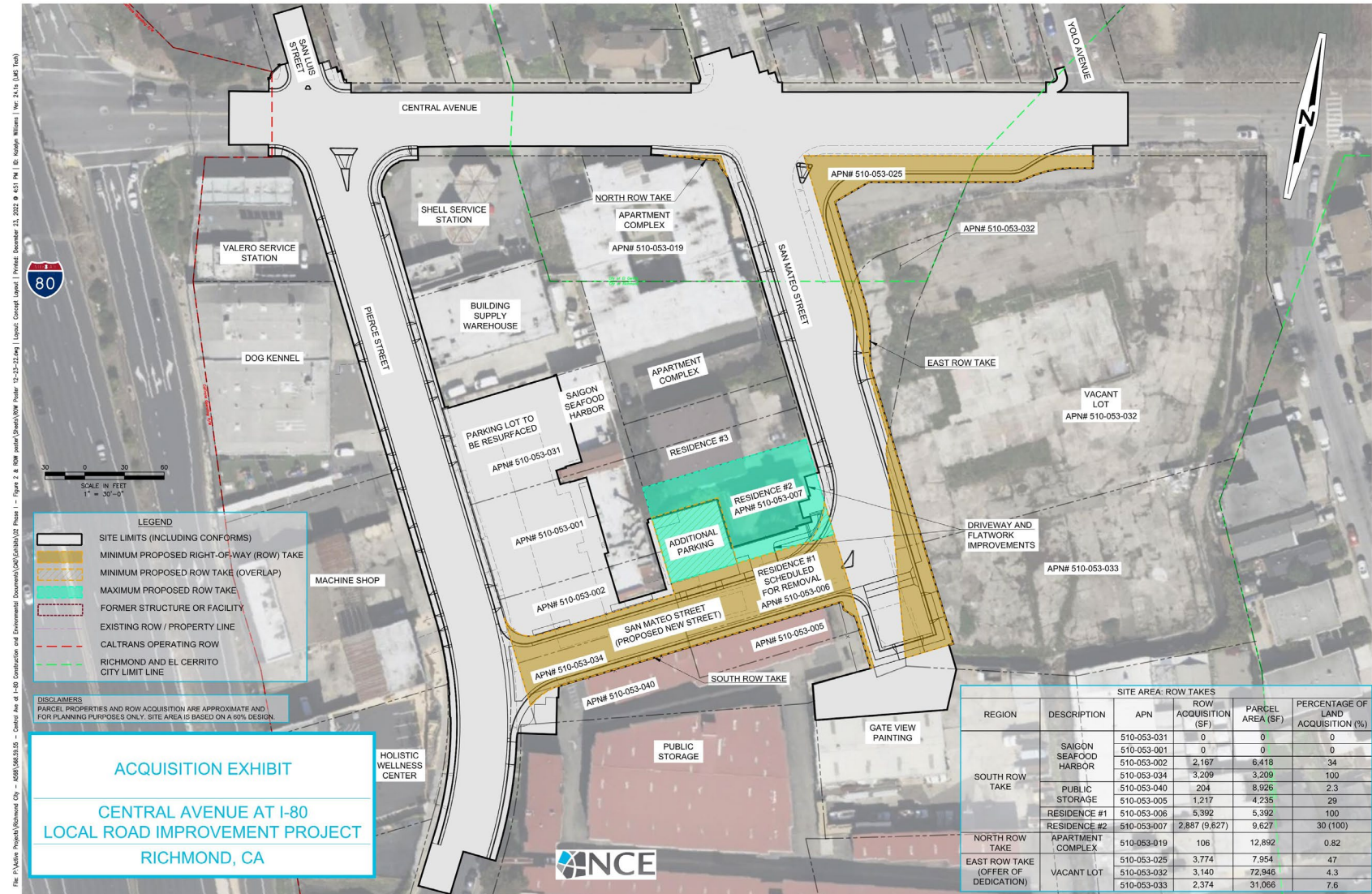
- **Begin PA&ED – 2018**

- Inter-agency coordination
- Public Outreach
- Enviro Studies



Shifting Gears / Design Phase

- Fine tuning ROW and Parcel impacts
- Changed from Alt 4 to Alt 3 – “Saigon Seafood”
- Design begins – January 2022

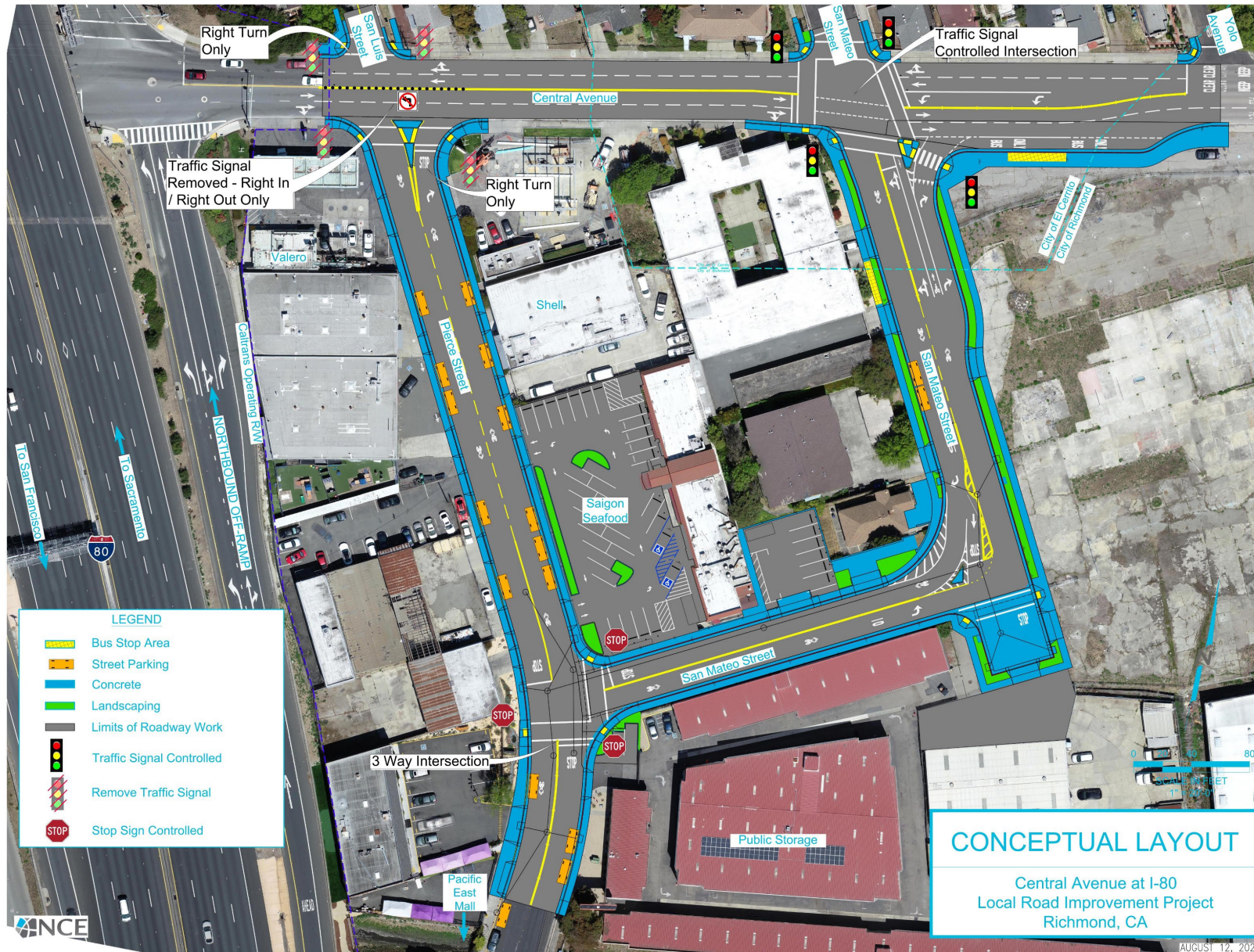




PA&ED Completion

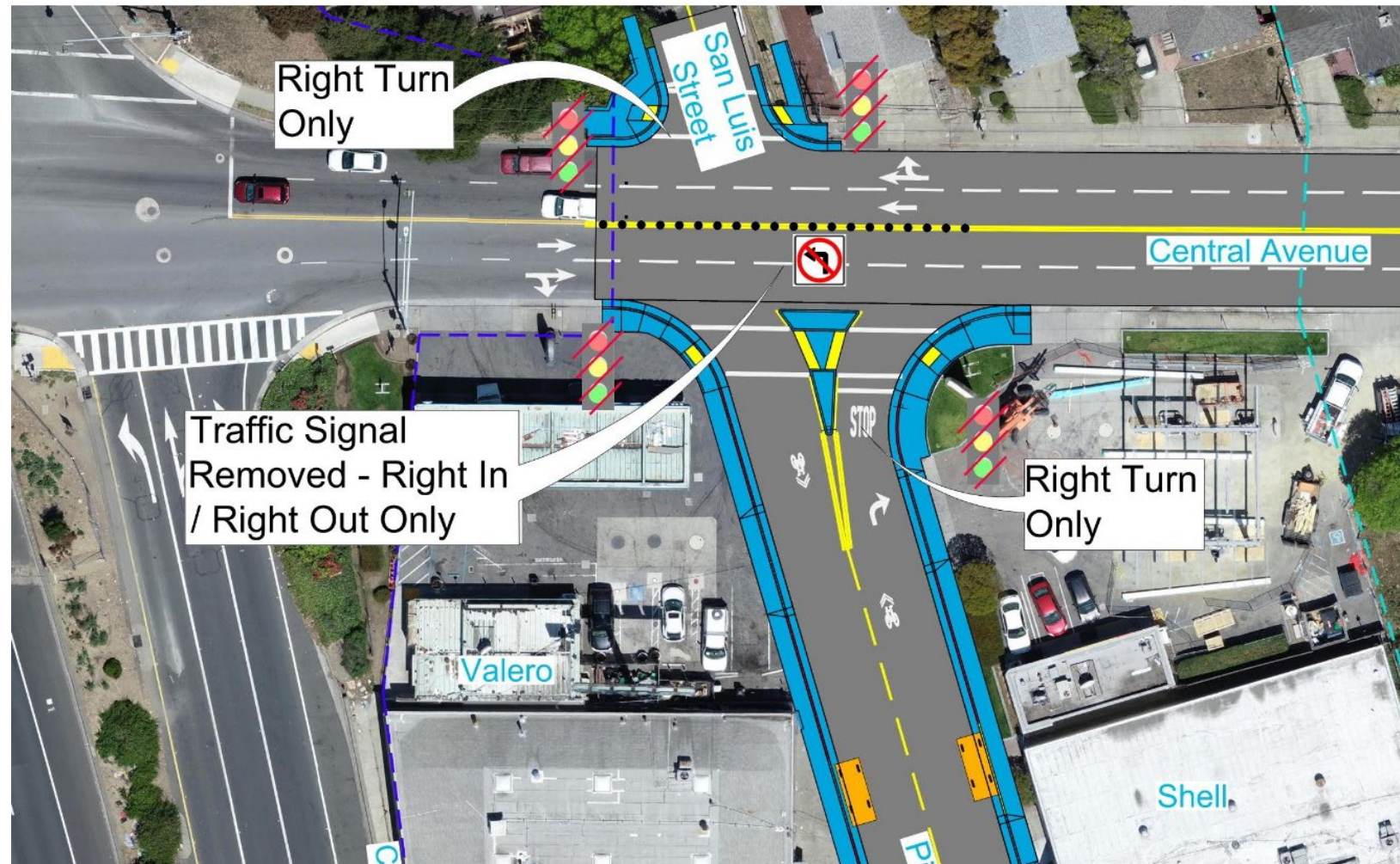
- CEQA
 - IS/MND Completed January 2023
- NEPA
 - Cat Ex Completed January 2023
- CTC Approval
 - March 2023

Design Elements - Overview



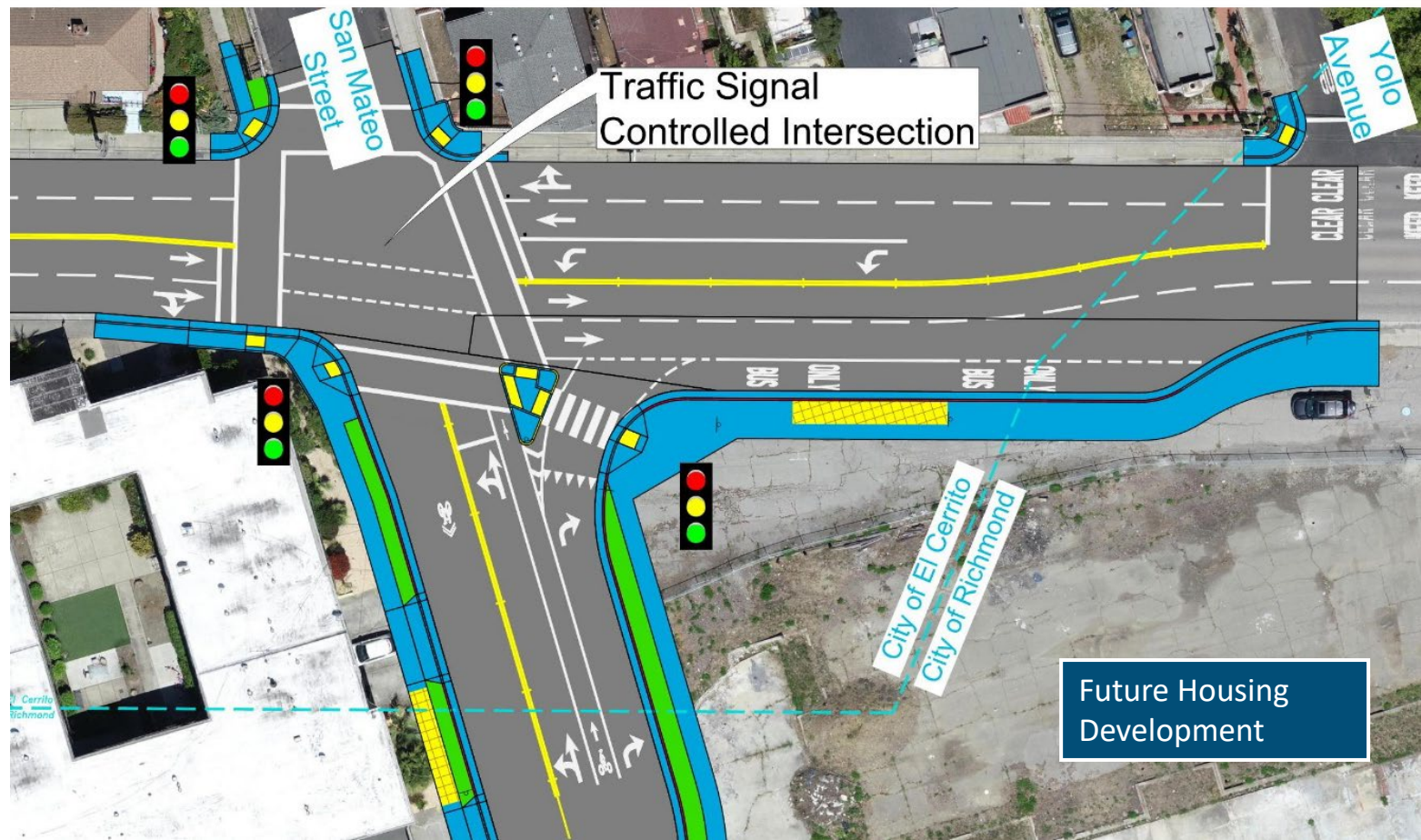
1. Central @ Pierce

- Removal of signals
- Right-in, right-out only
- Curb Ramps / Pedestrian islands
- Bicycle facilities
- Relocation of AC Transit stops



2. Central @ San Mateo

- Addition of signals
- Bicycle facilities
- Curb Ramps / Pedestrian islands
- New AC Transit Stops
- Coordination with Future Housing Development



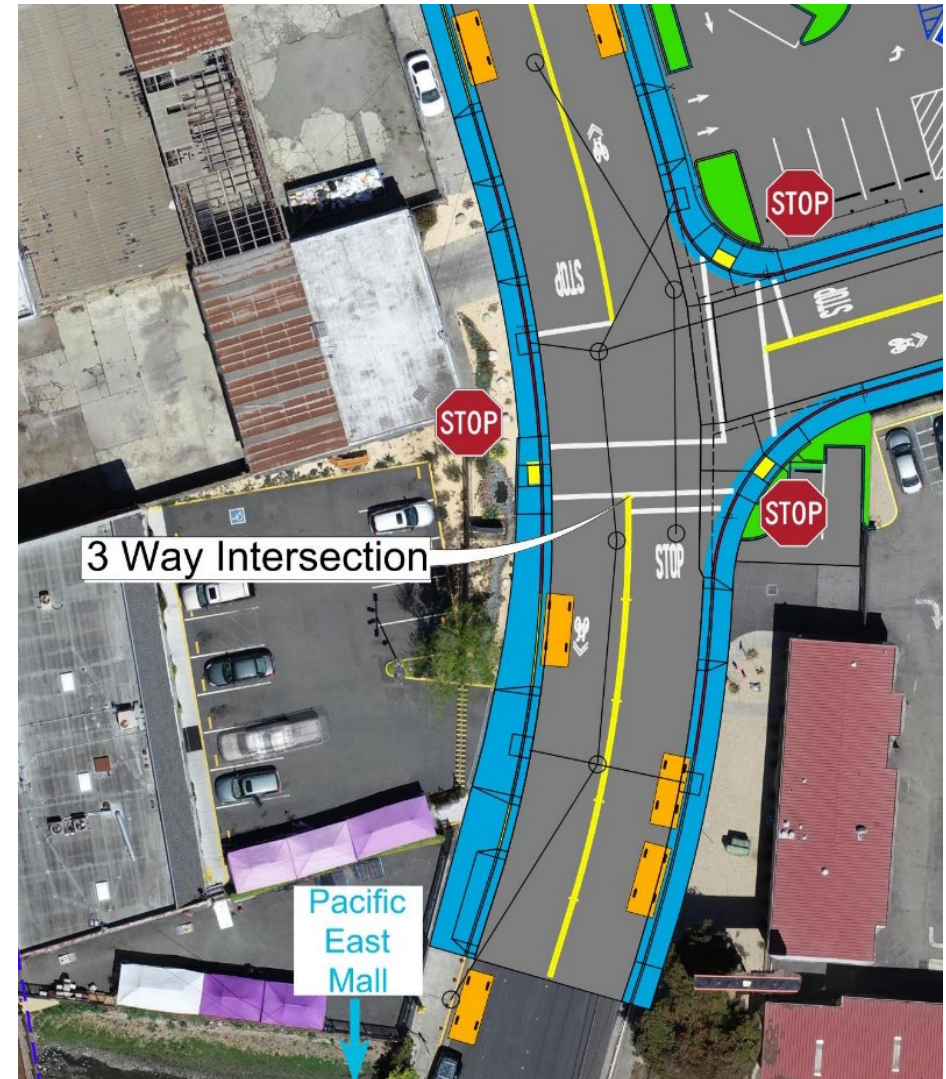
3. San Mateo Extension

- New roadway
- Designed for truck and bus use
- Business impacts



4. San Mateo @ Pierce

- New T-intersection
- Stop controlled
- New curb ramps



5. Utility Undergrounding

- Narrow Sidewalks / Direct Impacts
- CPUC Rule 20A
 - Re-classified San Mateo as a Major Collector (2019)
- Underground Utility District
 - July 2022 Established by Richmond (Res 102-22)
- PG&E Coordination
 - Verification Walk (February 2024)
- Coordination Ongoing with PG&E and El Cerrito



New San Mateo
Street alleyway



ROW Phase

- E-76 to Begin ROW (September 2023)
- ROW Consultant Selected (March 2024)
 - Monument ROW
- Revised Cost Estimate (August 2023)
 - \$14 Million Total, \$6 Million for ROW (possible shortfall)
 - Received \$1.111 Million from STMP funds
- Ongoing coordination
 - City of El Cerrito
 - Future Central Avenue Housing
 - PG&E



Estimated Schedule

- Complete inter-agency coordination and PS&E
 - Q4 2024
- Complete ROW Phase
 - June 2025
- Construction Phase
 - Begin Summer 2025
 - **Open to the Public Summer 2027**
- Closeout Phase
 - Begin Summer 2027
 - Complete Summer 2028



Questions

- For Further Information Contact:

City of Richmond – Public Works Department

Hillal Hamdan, PE

Senior Civil Engineer

Hillal_Hamdan@ci.richmond.ca.us

- Presenter:

Jim Bui, PE

Senior Engineer II

NCE

jbui@ncenet.com

